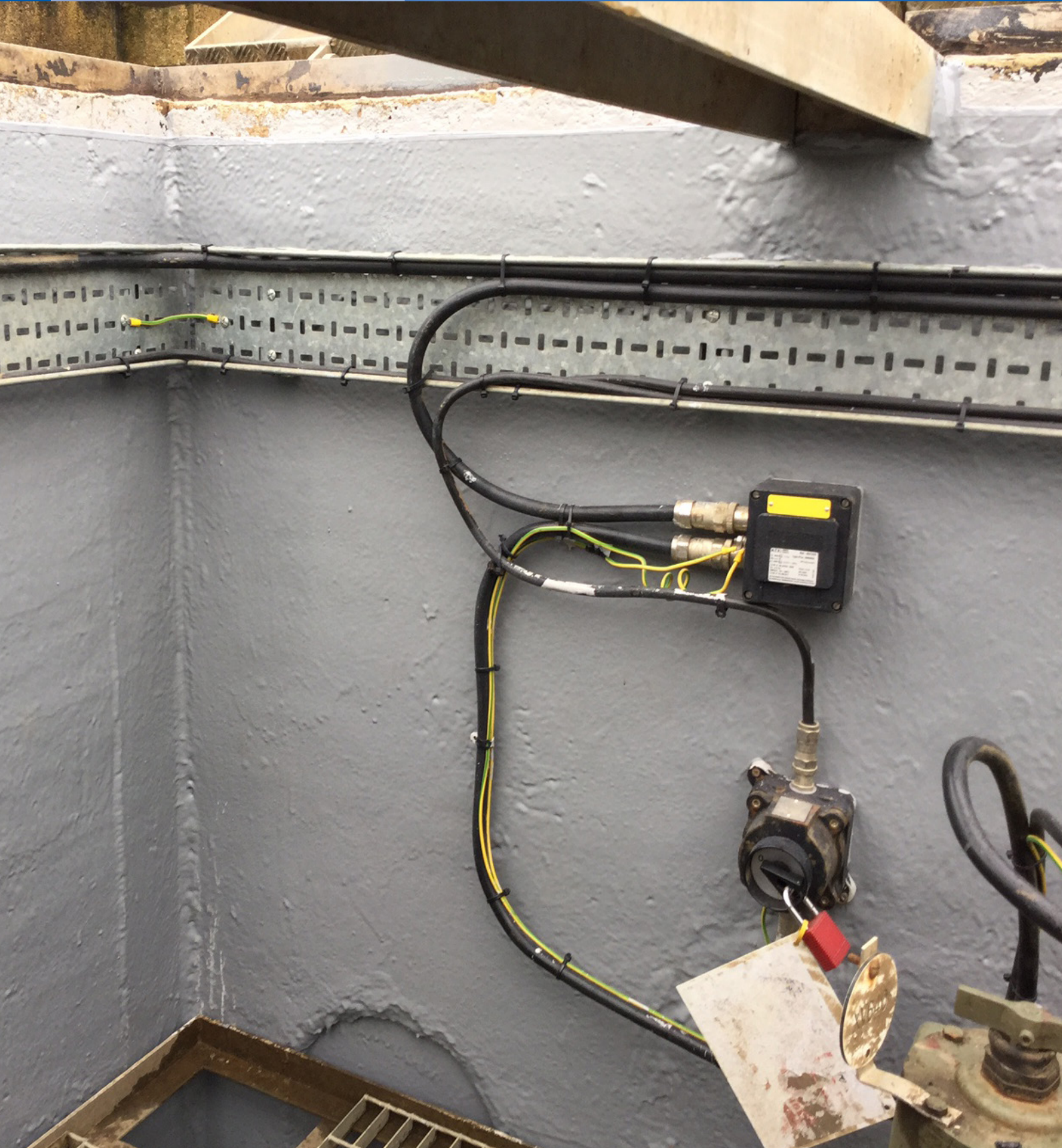




## Case Study

# Lining System Installation

MoD, Brize Norton



## The Project

Adler & Allan's Fuel Installation Services Division is a key provider to the Ministry of Defence estate, delivering petroleum, oil and lubricants (POL) and specialist maintenance.

At the RAF's largest station, RAF Brize Norton, a key base for Air-to-Air refuelling forces, the render on a 10,000 litre concrete bund containing diesel/heating fuel had started to break away. The fuel was used to supply a crucial back-up generator, risking fuel leakage, water ingress and downtime if left untreated.

## The Solution

On an initial site visit, an audit was carried out to assess the work required and measurements were taken for costing. Adler and Allan proposed a full lining of the concrete bund to alleviate any problems and increase the useful life of the asset.

A three-man team from Adler and Allan's Droitwich division attended the base to carry out the required work. The bund was lined with industry-leading protective coating, Adalline® 400 Multi, a quick drying spray lining which gives structural integrity as well as a waterproof and chemical barrier. The eco-friendly lining is ideal for confined spaces, such as bunds, as it contains no solvents or VOCs.

Additionally, the valve pit, diverting aviation fuel to different areas of the base, was lined with PTU™ (Chemical Resistant Spray Applied Polythiourea Elastomer) to stop water ingress into the pit. PTU™ lining is highly resistant, providing an effective barrier to water, jet and diesel fuel, petroleum-based chemicals and many other chemicals.

Operations needed to continue alongside any work being carried out and the team undertook a full site induction before commencement of any work. Being an active military aviation base, security had to be considered when working on the site and an escort was required to allow Adler and Allan staff to move safely around the site.

The team had to work with aviation fuel in confined spaces and as well as that, faced severe weather conditions whilst working on site. These issues were overcome by using trained and competent staff who worked diligently in accordance with Risk Assessments and Method Statements (RAMS).



## The Outcome

Adler and Allan was chosen because of the innovative lining service that they offer. Adalline® 400 Multi comes with a 10-year guarantee, giving peace of mind long term. Both jobs commissioned for this site, have been completed. The site is always kept clean and tidy and the client is very happy with the high standard of work carried out by Adler and Allan, who continue to provide key POL and maintenance services to the MoD.